



AIR BATHS

9300L
9300A
9300S
9300



9300L SHOWN

9300L – NEW

- Volume 190 litres
- Range +15 °C to +50 °C
- Stability ± 0.005 at 23 °C
- Peltier cooled
- Fast heating/cooling rate
- Stainless steel construction
- Perfect for temperature coefficient measurements

9300S – NEW

- Volume 53 litres
- Range +15 °C to 50 °C
- Stability ± 0.005 @ 23 °C
- Peltier cooled
- Fast heating/cooling rate
- Stainless steel construction
- Perfect for temperature coefficient measurements



9300A

- Volume 106 litres
- Range +15 °C to 40 °C
- Stability ± 0.005 @ 23 °C
- Peltier cooled
- Fast heating/cooling rate
- Stainless steel construction
- Perfect for temperature coefficient measurements



9300A SHOWN



9300 SHOWN

9300

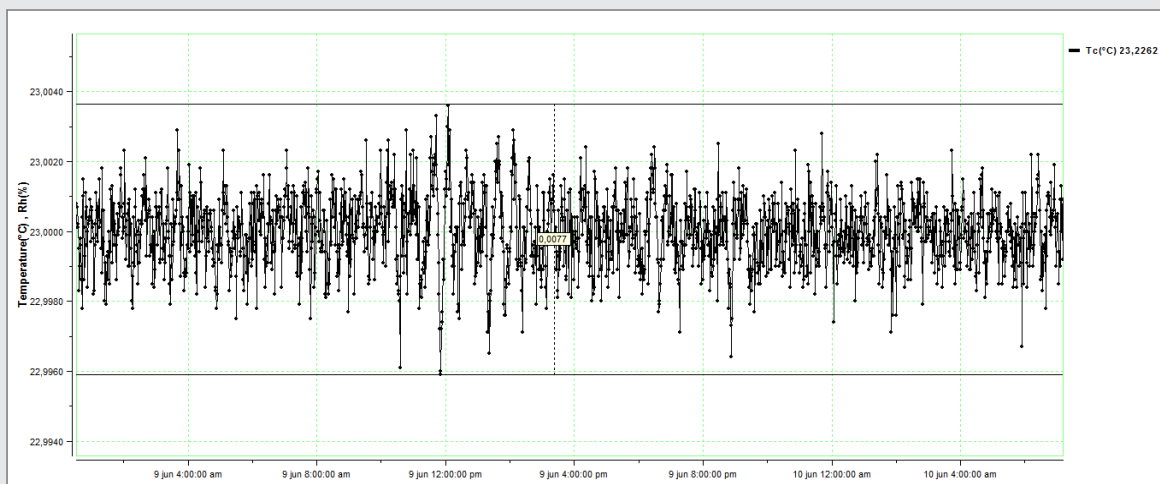
- Volume 50 litres
- Range +15 °C to 35 °C
- Stability ± 50 mK for ± 1 °C
- Peltier cooled
- Fast heating/cooling rate
- Temperature band protection
- Perfect for temperature coefficient measurements



CONTROLLER FUNCTIONS (AVAILABLE ON 9300S & 9300L ONLY)



CHAMBER TEMPERATURE STABILITY GRAPH AT +23 °C







Metrology is Our Science, Accuracy is Our Business™



TECHNICAL DATA

Series of Temperature Controlled Air Bath

Specifications: Rev 0

	9300S	9300A	9300L	9300
				
External Dimensions (L x W x H)	640 x 865 x 705 mm	432 x 660 x 940 mm	700 x 875 x 1300 mm	527 x 451 x 711 mm
Internal Dimensions (L x W x H)	350 x 375 x 400 mm	330 x 510 x 630 mm	410 x 570 x 810 mm	356 x 330 x 610 mm
Volume (L)	~ 53	~ 106	~ 190	~ 50
Temperature Range (°C)	+15...+50	+15...+40	+15...+50	+15...+35
Temperature Display Resolution (°C)	0.001	0.001	0.001	0.1
Temperature Set Resolution (°C)	0.01	0.001	0.01	0.1
Temperature Stability (°C)	± 0.005 @ 23 °C	± 0.005 @ 23 °C	± 0.005 @ 23 °C	± 0.050 @ 23 °C
Temperature Uniformity (°C)	± 0.01 @ 23 °C ± 0.05 @ 15 °C ± 0.10 @ 35 °C	± 0.01 @ 23 °C ± 0.05 @ 15 °C ± 0.10 @ 35 °C	± 0.02 @ 23 °C ± 0.08 @ 15 °C ± 0.20 @ 35 °C	± 0.1 @ 23 °C ± 0.2 @ 15 °C ± 0.3 @ 35 °C
Heating Rate	~ 80 min (+15 °C...+50 °C)	~ 100 min (+15 °C...+40 °C)	~ 145 min (+15 °C...+50 °C)	~ 200 min (+15 °C...+35 °C)
Cooling Rate	~ 80 min (+50 °C...+15 °C)	~ 100 min (+40 °C...15 °C)	~ 160 min (+50 °C...+15 °C)	~ 200 min (+40 °C...15 °C)
Temperature Control	Cascade PID	PID	Cascade PID	PID
Power Supply	230 V 50/60 Hz (± 10 %)	100 - 240 V 50/60 Hz	230 V 50/60 Hz (± 10 %)	85 - 265 V 47/63 Hz
Wattage (W)	200	300	200	100
Interface	RS 232 (USB or Ethernet as Option)	GPIB	RS 232 (USB or Ethernet as Option)	None
Shelve	2	2	2	2
Access Port	2 x 50 mm Dia	1 x 50 mm Dia	2 x 50 mm Dia	1 x 50 mm Dia
Weight (kg)	~ 79	~ 73	~ 150	~ 22

Metrology is Our Science, Accuracy is Our Business™



ORDERING INFORMATION AND ACCESSORIES

9300S & 9300L only

Description	Part No.
Air Bath 9300S	9300S
Air Bath 9300L	9300L
USB Interface	MI 1466
Ethernet Interface	MI 1716
Shelve 9300S	MI 1779
Shelve 9300L	MI 1727
Access Port w. Plug 0 50 mm	MI 608
Password Protection	MI 1718
Evaluation Report	MI 1719
Evaluation Report C (Accredited ISO/IEC 17025:2017)	MI 1777
TK-Tool (Monitoring and Data Collection Software)	MI 104
Trolley for 9300S	MI 1781
Trolley for 9300L	MI 2612

Corporate Headquarters

Measurements International
 PO Box 2359, 118 Commerce Drive
 Prescott, Ontario, Canada K0E 1T0
 Phone: 613-925-5934
 Fax: 613-925-1195
 Email: sales@mintl.com
 Toll Free: 1-800-324-4988

Worldwide Offices

MI-USA
 Phone: 407-706-0328
 Email: sales@mintl.com

MI-China
 Phone: +(86) 10-64459890
 Email: sales@mintl.com

MI-Europe

Phone: +(420) 731-440-663
 Email: sales@mintl.com

MI-Japan
 Phone: +(81) 72 39 64 660
 Email: kaz@mijpn.com

MI-India

Phone: +(91) 98 10 134 932
 Email: sales@MILLP.co.in



www.mintl.com

© Copyright 2019 Measurements International Limited
 All rights reserved

Metrology is Our Science, Accuracy is Our Business™